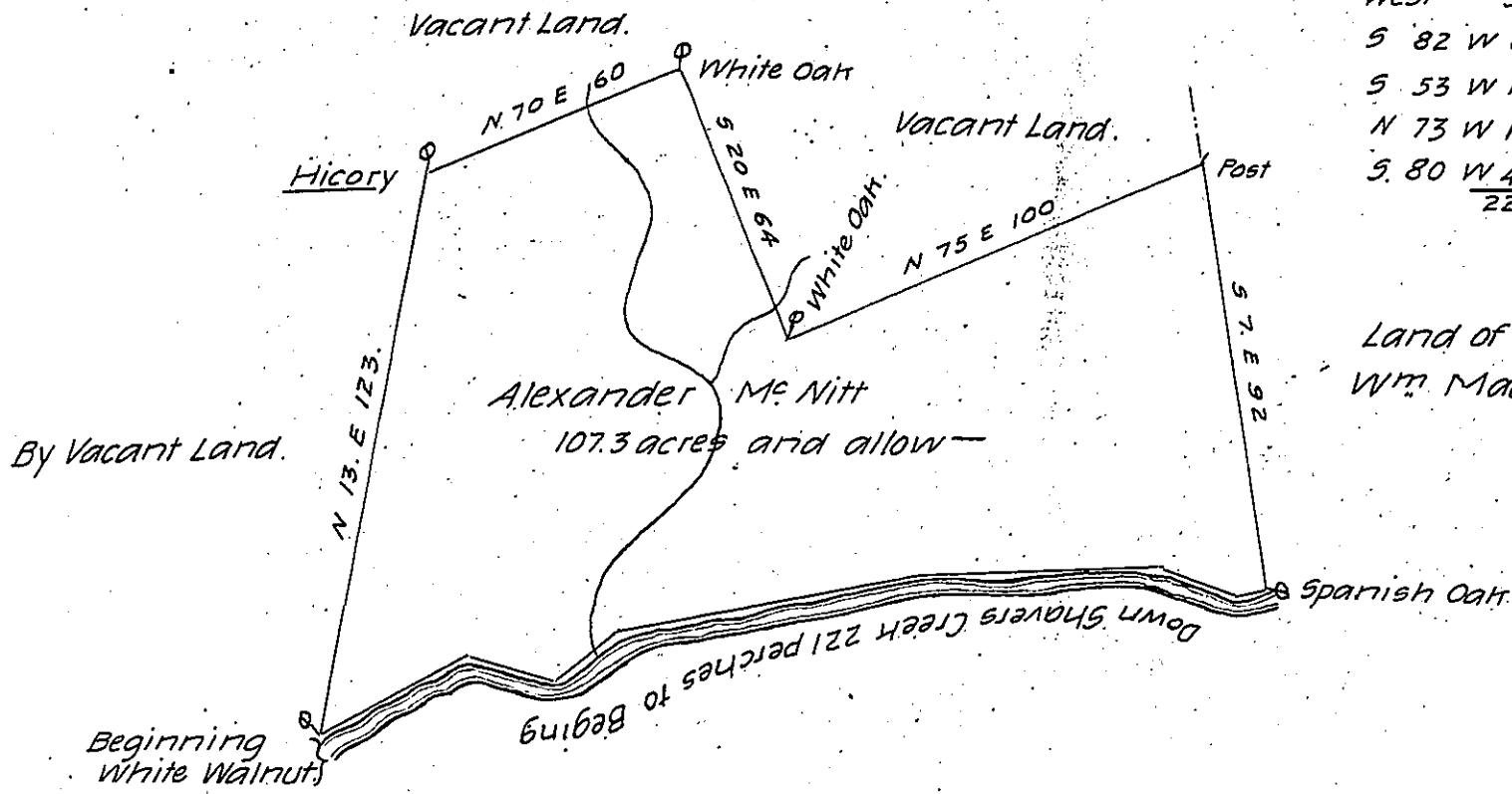


Courses & Distances
Down the Creek.

S 80 W 7
N 66 W 18
West 54
S 82 W 66
S 53 W 17
N 73 W 19
S. 80 W 40
221-



The Draught of a Tract of Land called Nutland situate on the north side of Shavers Creek in the County of Cumberland containing one Hundred and seven acres Sixty perches with the usual allowance of six acres P. Cent for Roads Survey'd the 10th day of November 1766 In pursuance of an Order of Survey to Alexander Mc Nitt No 1062 bearing date at Philad^a the first day of September Anno Dom 1766

To John Lukens Esq S. G
of Pennsylvania

P. _____

Wm Maclay D.S

IN TESTIMONY that the above is a copy of the original remaining on file in the Department of Internal Affairs of Pennsylvania, made conformably to an Act of Assembly approved the 16th day of February, 1833, I have hereunto set my Hand and caused the Seal of said Department to be affixed at Harrisburg, this fifteenth day of December 1905.

Loac R. Brown
Secretary of Internal Affairs.